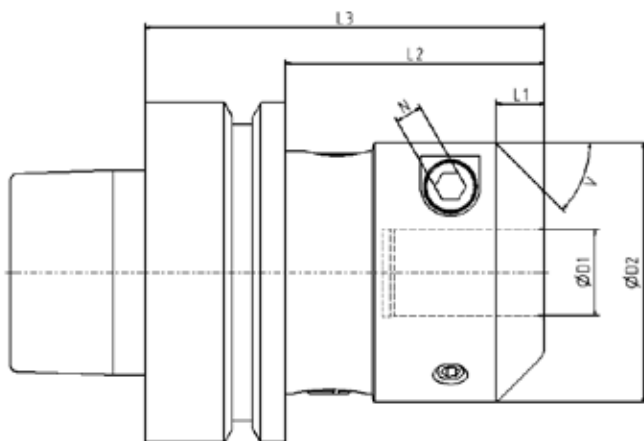


NEW



ETP HYDRO-GRIP G3

ETP HYDRO-GRIP type G is historically very tough but the new generation type G3 has an even more compact design. The hydro chuck is equipped with our well known built in safety device. It prevents the tool from falling out when the chuck is not pressurized. Pressurizing is carried out with an allen T-wrench. The G3 chuck allows quick, safe and easy tool changes and gives a perfect runout and repeatability. The new generation G3 allows you to pressurize the chuck without any inserted tool!



Shaft:
HSK 63F – *standard*

Upon request:
SK30
SK40
BT30
BT35
BT40
SCM 30
CMS 30

ETP HYDRO-GRIP G3

Technical Specification

Type	D1	D2	L1	L2	L3	V	N	Max rpm
G3-12/HSK63F	12	45	3	42	68	70°	5	25000
G3-16/HSK63F	16	48	9	48	74	45°	5	25000
G3-20/HSK63F	20	52	15	54	80	30°	5	25000
G3-25/HSK63F	25	59	22,5	61,5	87,5	25°	5	25000
G3-1/2"/HSK63F	12,7	45	4,5	43,5	69,5	65°	5	25000
G3-5/8"/HSK63F	15,875	48	9	48	74	45°	5	25000
G3-3/4"/HSK63F	19,05	52	13,5	52,5	78,5	35°	5	25000
G3-1"/HSK63F	25,4	59	22,5	61,5	87,5	25°	5	25000

Tolerances

The type G3 chuck is designed and manufactured for a router bit shank with the tolerance g6 (h7). The type G3 chuck is balanced to G2,5 at 25000 rpm. The runout is measured at 4xD and the max runout is 0,010 mm. A normally balanced chuck and tool can be used up to a max. speed of 25000 rpm.

www.etp.se

ETP Transmission AB
Box 1120
S-581 11 Linköping
Sweden

ETP Transmission Inc.
135 Furniture Row
Milford, CT 06460
USA