



ETP HYDRO-GRIP®

Hydraulic high precision toolholder

ON MILLING MOTORS



NOW WITH REDUCTION SLEEVES

Many users within the industrial woodworking sector have for years benefited from high-quality milling motors in combination with the ETP hydraulic tool holding advantages.

But we don't stop there! We are happy to introduce even more flexibility in tool holding with our complementary range of reduction sleeves suitable for the ETP HYDRO-GRIP size 25 mm holders.

This will now allow you to fully utilise the advantages of hydraulic tool holding in any tool size application from 8-25 mm.

BENEFITS & FEATURES

- Short overhang
- Easy handling
- High clamping force
- Can be used with reduction sleeves



EASY MOUNTING WITH TORQUE WRENCH



VIBRATION DAMPING

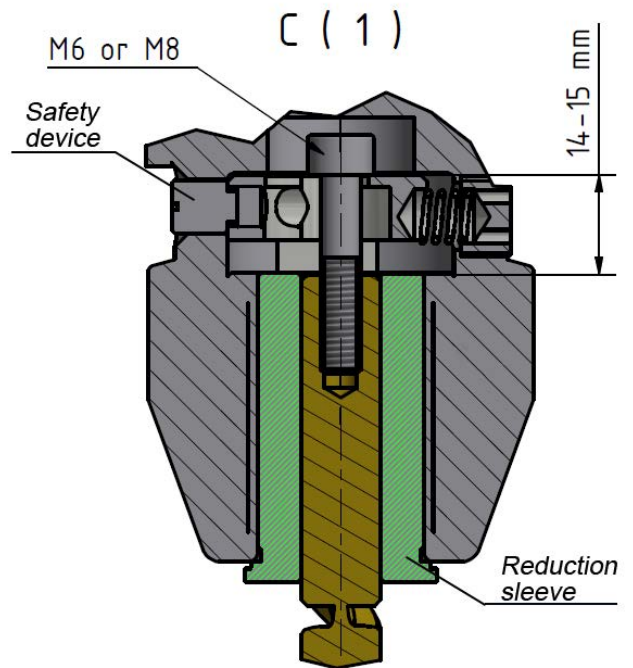
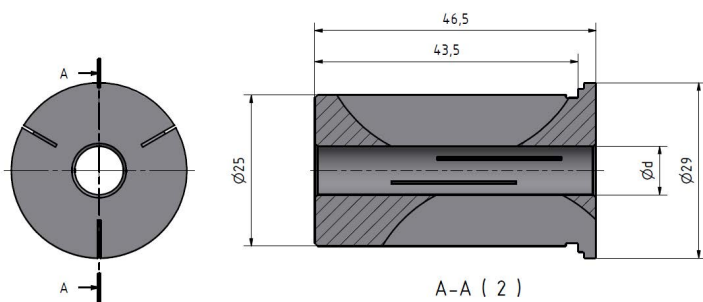


HIGH RUNOUT ACCURACY



FAST SET-UP TIME

Reduction sleeve HC for ETP HYDRO-GRIP® ON MILLING MOTORS



Reduction sleeve HC

The reduction sleeves HC are designed to fit with the ETP Toolholders equipped with our world famous safety device.

Reduction Sleeves mm to mm

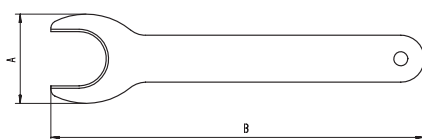
Part no.	Item description	d mm
Reduction Sleeves HC 25		
NEW! RHC25.08000	HC 25 / 8 mm	8
NEW! RHC25.10000	HC 25 / 10 mm	10
NEW! RHC25.12000	HC 25 / 12 mm	12
NEW! RHC25.16000	HC 25 / 16 mm	16
NEW! RHC25.20000	HC 25 / 20 mm	20

Reduction Sleeves mm to inch

Part no.	Item description	d inch
Reduction Sleeves HC 25		
NEW! RHC25.09521	HC 25 / 3/8"	3/8"
NEW! RHC25.12701	HC 25 / 1/2"	1/2"
NEW! RHC25.19051	HC 25 / 3/4"	3/4"

Extractor

Item description	Part no.	For Sizes	A [mm]	B [mm]
EHS 25	E7321.25000	HC 25	51.0	180



The extractor helps to remove the reduction sleeve from the toolholder.

BENEFITS & FEATURES

Accurate precision

High runout accuracy < 3 μm.

High flexibility

Clamping of different tool shank diameters. 8, 10, 12, 16, 20 mm & 3/8", 1/2", 3/4".

Power increase

When using reduction sleeves the transmittable torque is increased.

- Improper assembly can damage the concentricity of the reduction sleeve.
- Insert tools the full length of the reduction sleeve.
- Tool shank h6 or h7 can be used.
- Do not clamp reduction sleeve without a tool. Reduction Sleeve will be damaged.

