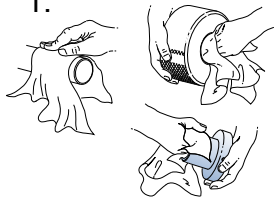
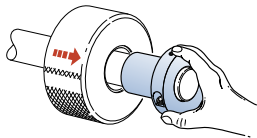


1.



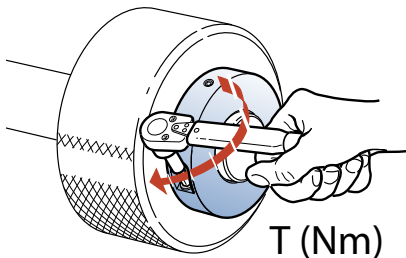
2.



3.

ETP-EXPRESS	T (Nm)
15-35	5
38-60	21
70-80	39
90*-100*	39

*) *Two screws.*
Zwei Schrauben.
Duex vis.
Dos tornillos.
Due viti.



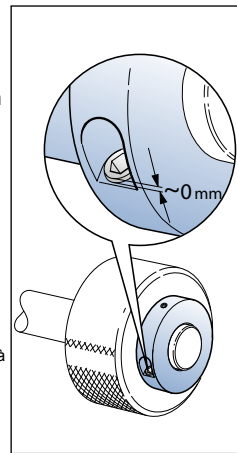
UK: At the recommended tightening torque the screw position is approx. level with the recess.

DE: Das empfohlene Anzugsmoment ist erreicht, wenn die Schraubenoberkante mit der Planfläche übereinstimmt.

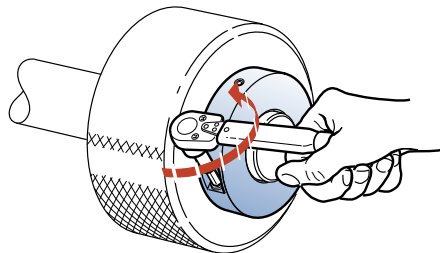
FR: Au couple de serrage recommandé la vis affleure approximativement l'évidement.

ES: Al alcanzar el par de apriete la posición del tornillo es aprox. la de la zona plana.

IT: Una volta serrata la vite alla coppia di serraggio indicata, la testa della vite verrà a trovarsi circa allo stesso livello della propria sede.



1.



2.

