

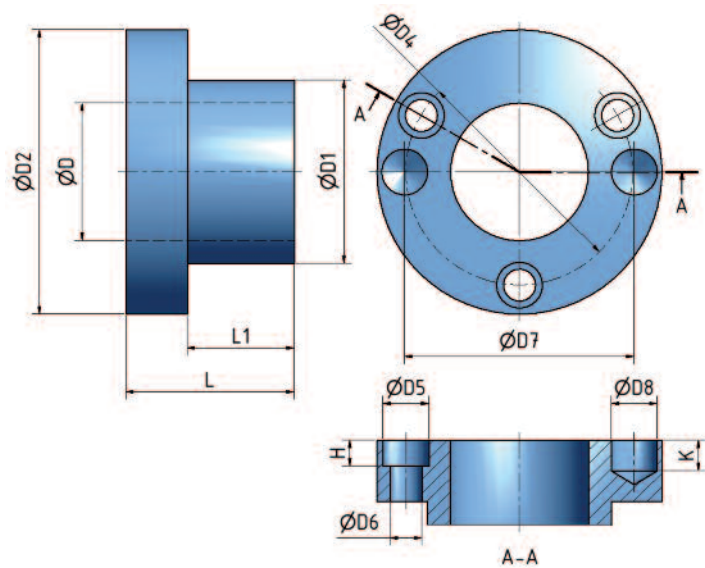


### Benefits and features

- Made in short lengths
- Light press fit
- Pressurizing is carried out with a high pressure grease pump

## ETP HYDRO-GRIP® A

Sleeve for **permanent tool assembly**. Made in short lengths to allow for a light press fit. The tool and sleeve should be bolted together. Pressurizing is carried out with a high pressure grease pump.



### Technical specification ETP HYDRO-GRIP® A

Type	D	D1	D2	D4	D5	D6	D7	D8	H	K	L	L1
A-40/60-55	40	60	93	74	14	9	75	15	8.5	10	55	35
A-45/60-55*	45	60	93	74	14	9	70	M8	8.5		55	35
A-45/60-75*	45	60	93	74	14	9	70	M8	8.5		75	55
A-50/60-55*	50	60	93	74	14	9	75	15	8.5	10	55	35
A-50/60-75*	50	60	93	74	14	9	75	15	8.5	10	75	55
A-60/70-55***	60	70	105	86	14	9	85	15	9	10	55	35
A-1 1/4"/40-55**	1 1/4"	40	75	55	14	9	55	15	9	10	55	35
A-1 13/16"/60-55	1 13/16"	60	93	74	14	9	75	15	8.5	10	55	35
A-1 13/16"/65-55	1 13/16"	65	98	80	14	9	80	15	9	10	55	35
A-2 1/8"/65-55	2 1/8"	65	98	80	14	9	80	15	9	10	55	35

\*) The A Ø45 and Ø50 has two, threaded M8-holes for carrier pegs, on a 70 mm pitch diameter.

\*\*) The A-1 1/4"/40 has two tool fastening holes.

\*\*\*) The A-60/70-55 has two, threaded M8-holes for carrier pegs, on a 85 mm pitch diameter.

See page 44 for more information.